

KHSAA Basketball - Game Box Score

Rockcastle County Lady Rockets vs. Christian County Lady Colonels

Date: 03/25/2004 Time: 12 Noon CST Site: Diddle Arena-Bowling Green, KY Attendance: N

Visitors: Christian County Lady Colonels

##	Name	P	FG	3 Pt	FT	PTS	ORB	DRB	TR	PF	AST	TO	BS	ST	MIN
3	* Lydia Watkins		5/10	0/0	1/4	11	3	6	9	1	0	3	0	2	22:49
10	Shanna McCombs		0/0	0/0	0/0	0	0	0	0	2	2	2	0	0	15:08
12	* Corkey Stiger		1/7	0/6	1/2	3	1	2	3	1	2	1	0	4	25:59
15	* Shaleea Petty		5/15	0/1	3/3	13	1	2	3	1	1	2	0	5	29:11
24	* Rita Sanchez		0/2	0/0	0/0	0	4	1	5	4	1	0	1	1	16:20
25	Annissa Wilson		0/0	0/0	0/0	0	0	0	0	0	0	0	0	0	1:27
30	Tracey Howard		0/0	0/0	0/0	0	0	0	0	0	0	0	0	0	DNP
31	Denisha Mumford		0/0	0/0	0/0	0	0	0	0	1	0	1	0	0	1:27
32	* Arnika Brown		11/16	0/0	2/2	24	2	2	4	1	2	4	1	3	30:15
34	Ashley Briggs		0/0	0/0	0/0	0	0	0	0	0	0	0	0	0	4:20
45	Shermania Riley		1/1	0/0	0/0	2	0	0	0	0	0	0	0	1	1:27
50	Renea Maxie		0/0	0/0	0/0	0	0	0	0	0	0	0	0	0	DNP
55	Jana Betts		1/3	0/0	2/2	4	2	1	3	2	1	0	0	1	8:43
5	Ashley Thompkins		0/0	0/0	0/0	0	0	0	0	0	0	1	0	0	1:27
21	Shetera Lewis		0/1	0/0	0/3	0	1	0	1	0	0	0	0	1	1:27
	Team						0	2	2						
	Totals		24/55	0/7	9/16	57	14	16	30	13	9	14	2	18	160
	2 PT FG		1st Half	11/29	37.9%	2nd Half	13/26	50.0%	Game	24/55	43.6%				
	3 PT FG		1st Half	0/5	0.00%	2nd Half	0/2	0.00%	Game	0/7	0.00%				
	Free Throws		1st Half	1/2	50.0%	2nd Half	8/14	57.1%	Game	9/16	56.3%				

Home: Rockcastle County Lady Rockets

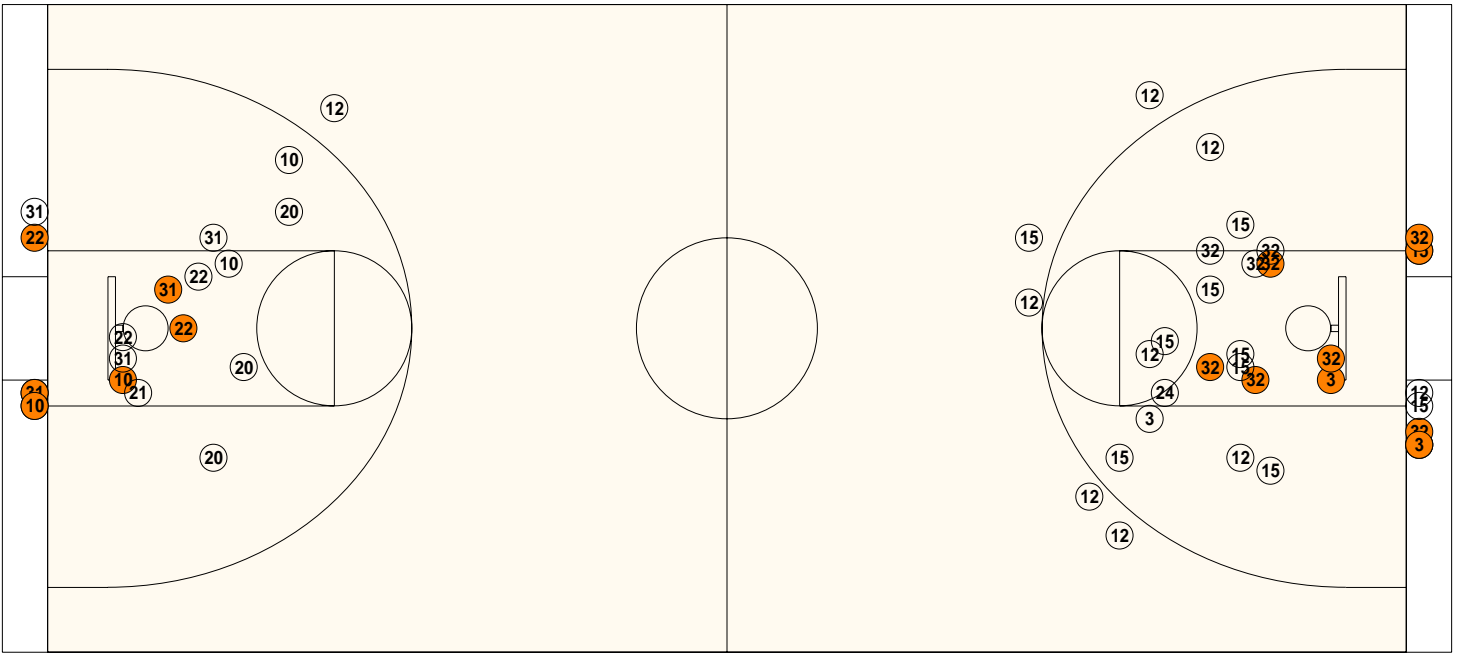
##	Name	P	FG	3 Pt	FT	PTS	ORB	DRB	TR	PF	AST	TO	BS	ST	MIN
3	Ashley Mize		0/0	0/0	0/0	0	0	0	0	0	0	0	0	0	0:49
5	Jessi Asher		0/1	0/0	2/2	2	0	0	0	1	0	0	0	1	1:18
10	Sara Parsons		2/6	0/0	0/0	4	4	6	10	3	4	2	1	2	23:20
12	* Tara Rowe		0/2	2/4	2/2	8	0	1	1	1	1	11	1	2	27:20
14	Holly Ann Colson		0/0	0/0	0/0	0	0	0	0	0	0	1	0	0	0:53
15	Rachel Killen		0/0	0/0	0/0	0	0	0	0	0	0	0	0	0	0:25
20	* Ashley Lunsford		2/6	0/2	0/0	4	0	5	5	3	1	6	0	1	30:20
21	* Katie Parsons		0/1	0/0	0/0	0	0	2	2	1	1	3	0	0	13:43
22	* Lauren Clontz		4/8	0/0	1/3	9	1	2	3	3	1	3	0	0	27:37
23	Ainsley Bussell		0/0	0/0	0/0	0	0	0	0	0	0	0	0	0	0:25
31	* Heather Hammond		6/14	0/0	4/8	16	4	5	9	1	0	4	1	2	28:58
32	Rachel Stocker		0/0	0/0	0/0	0	1	0	1	0	0	2	0	0	4:02
35	Jessica Robinson		0/0	0/0	0/0	0	0	0	0	0	0	0	0	0	DNP
40	Allison Durham		0/0	0/0	0/0	0	0	0	0	0	0	0	0	0	0:25
30	Lura Cash		0/0	0/0	0/0	0	0	0	0	0	0	0	0	0	0:25
4	Johnna Abney		0/0	0/0	0/0	0	0	0	0	0	0	0	0	0	DNP
	Team						4	4	8						
	Totals		14/38	2/6	9/15	43	14	25	39	13	8	32	3	8	160
	2 PT FG		1st Half	6/19	31.6%	2nd Half	8/19	42.1%	Game	14/38	36.8%				
	3 PT FG		1st Half	0/1	0.00%	2nd Half	2/5	40.0%	Game	2/6	33.3%				
	Free Throws		1st Half	4/4	100%	2nd Half	5/11	45.5%	Game	9/15	60.0%				

	CHRI	ROCK		CHRI	ROCK		CHRI	ROCK
Free Throw Pts	9	9	3Pt Points	0	6	Pts/Possession	0.81	0.62
Pts off Turnovers	36	6	2nd Chance Points	10	2	Pts off Bench	6	6
Total Rebounds	30	39	Team Rebounds	2	8	Dead Ball Reb	5	5
Off Rebound %	35.9	46.7	Def Rebound %	53.3	64.1	Total Rebound %	43.5	56.5
3Pt Efficiency	-29.1	+8.8	Def. Stops	48	39	Pts/Shot	0.81	0.84
Technical Fouls	CHRI	ROCK	None	None				
Officials	Shannon Feck, Tony Beard, Jack Whittemore							

	Qtr 1	Qtr 2	Qtr 3	Qtr 4	OT 1	OT 2	OT 3	OT 4	Total
Christian County Lady Colonels	9	14	18	16	0	0	0	0	57
Rockcastle County Lady Rockets	8	8	8	19	0	0	0	0	43

Largest Lead ROCK 27 CHRI 49 (22 pts) **Lead Changes** 4 **Number of Ties** 1
Comments: None

FIRST HALF



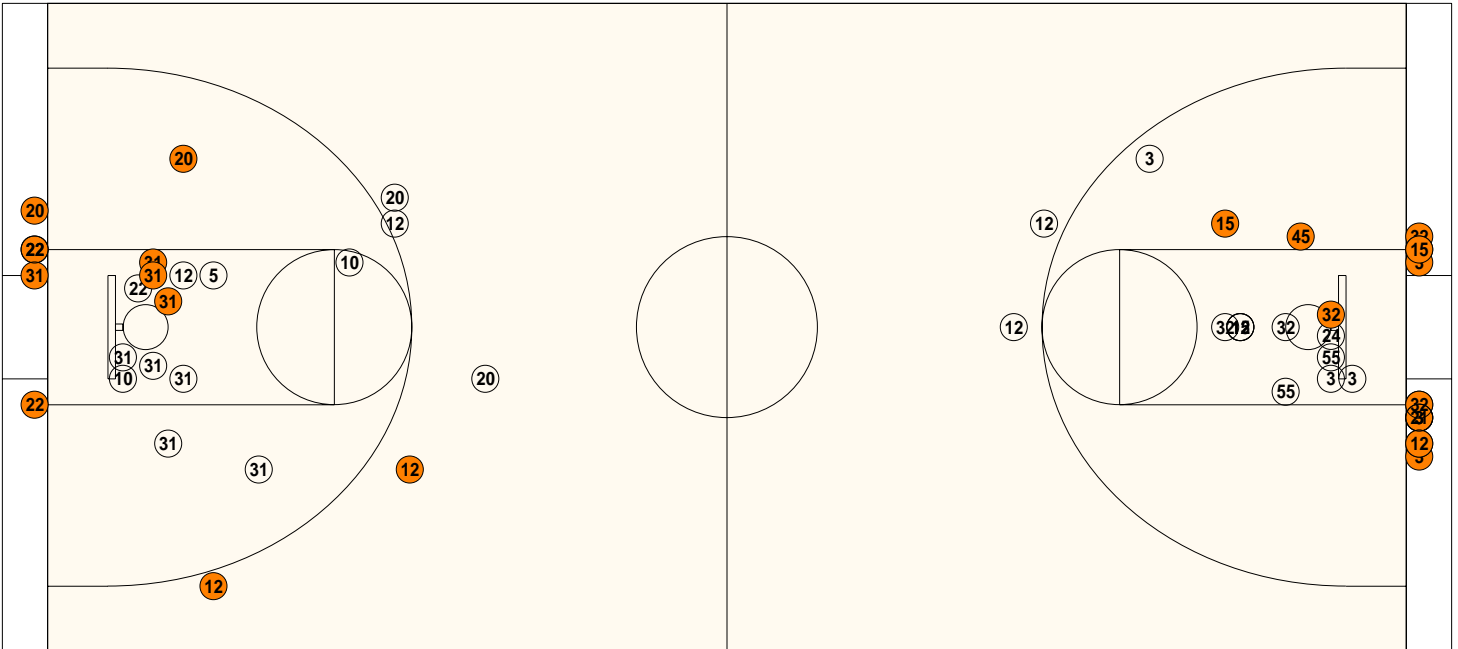
Rockcastle County

Shooting		Pts	Pts
2FG	6/19 (31.6%)	12	Pts/Shot 0.73
3FG	0/1 (0.00%)	0	2nd Eff Pts 2
TFG	6/20 (30.0%)		Pts off TO's 0
FT	4/4 (100%)	4	3Pt Eff -21.1
Scoring Distribution: 2FG 75.0% 3FG 0.0% FT 25.0%			

Christian County

Shooting		Pts	Pts
2FG	11/29 (37.9%)	22	Pts/Shot 0.66
3FG	0/5 (0.00%)	0	2nd Eff Pts 4
TFG	11/34 (32.4%)		Pts off TO's 18
FT	1/2 (50.0%)	1	3Pt Eff -25.3
Scoring Distribution: 2FG 95.7% 3FG 0.0% FT 4.3%			

SECOND HALF



Rockcastle County

Shooting		Pts	Pts
2FG	8/19 (42.1%)	16s	Pts/Shot 0.93
3FG	2/5 (40.0%)	6	2nd Eff Pts 0
TFG	10/24 (41.7%)		Pts off TO's 6
FT	5/11 (45.5%)	5	3Pt Eff +11.9
Scoring Distribution: 2FG 59.3% 3FG 22.2% FT 18.5%			

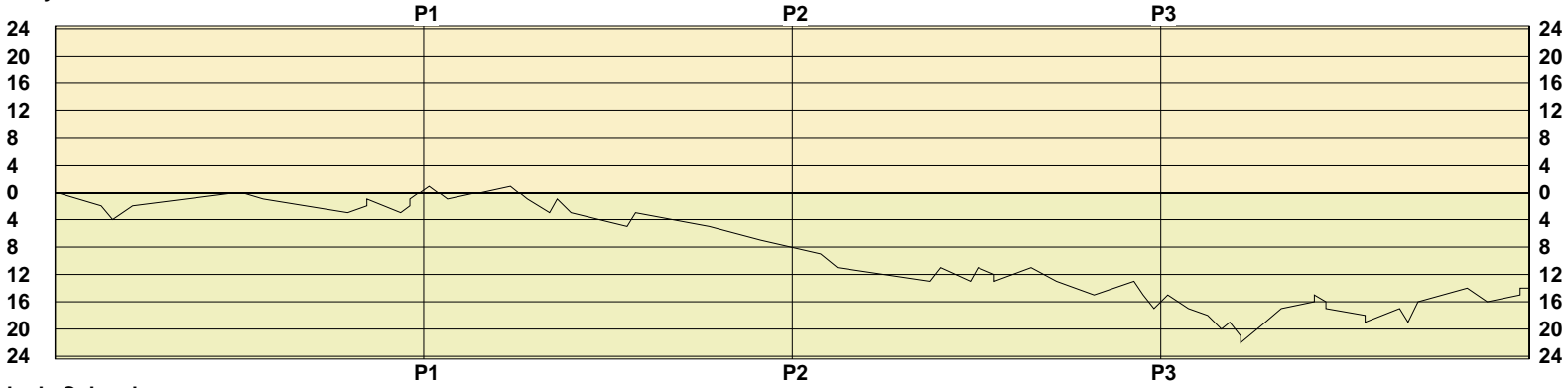
Christian County

Shooting		Pts	Pts
2FG	13/26 (50.0%)	26s	Pts/Shot 0.97
3FG	0/2 (0.00%)	0	2nd Eff Pts 6
TFG	13/28 (46.4%)		Pts off TO's 18
FT	8/14 (57.1%)	8	3Pt Eff -33.3
Scoring Distribution: 2FG 76.5% 3FG 0.0% FT 23.5%			

KHSAA Basketball - Scoring Timeline Report
Rockcastle County Lady Rockets vs. Christian County Lady Colonels
 DATE: 03/25/2004 TIME: 12 Noon CST SITE: Diddle Arena-Bowling Green, KY

Lady Rockets

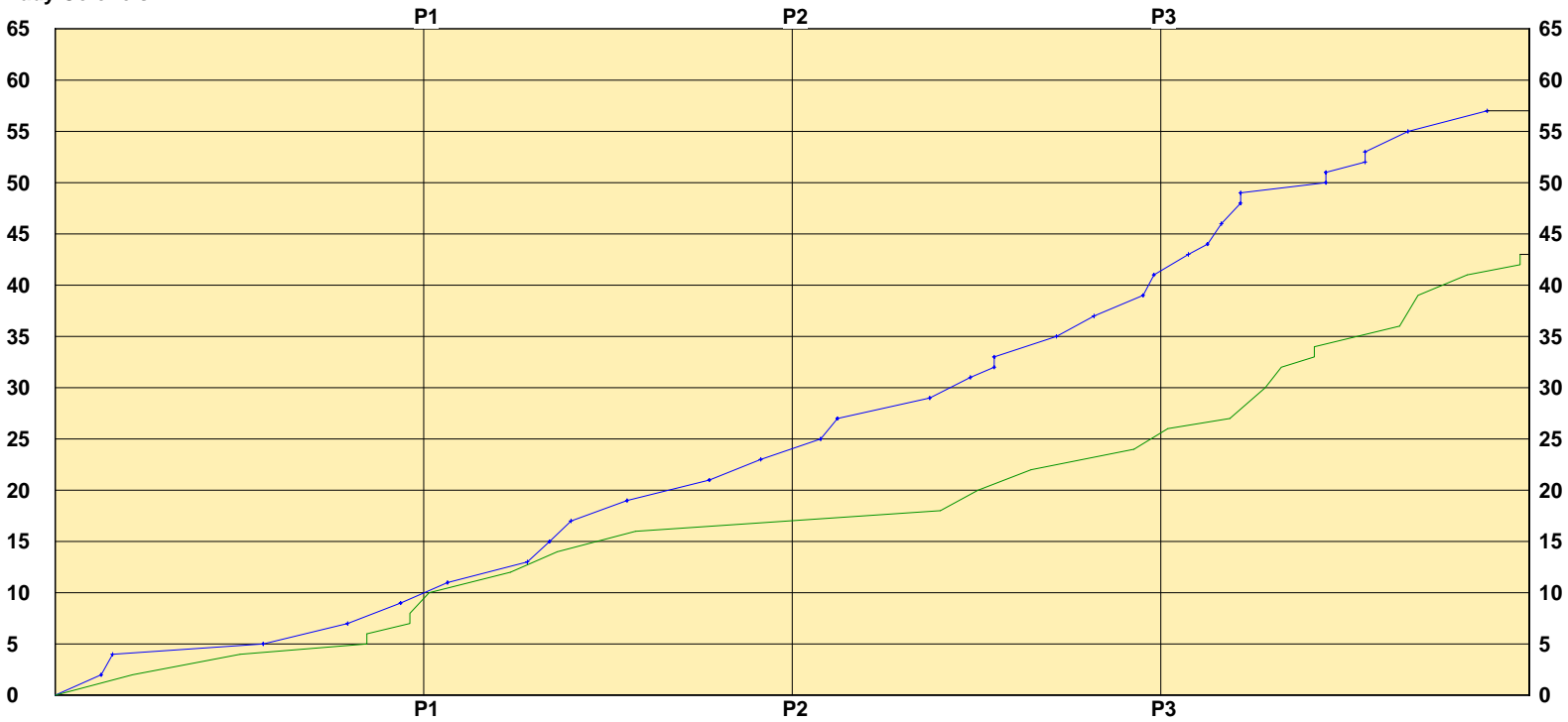
LEAD TIMELINE



Lady Colonels

Lady Rockets
 Lady Colonels

SCORING TIMELINE



Largest Lead ROCK 27 CHRI 49 (22 pts) Lead Changes 4 Number of Ties 1

KHSAA Basketball - Play by Play Report - Scoring Only (pg 1)
Rockcastle County Lady Rockets vs. Christian County Lady Colonels
Date: 03/25/2004 Time: 12 Noon CST Site: Diddle Arena-Bowling Green, KY Attendance: N

Name	Action	Action	Score	Clock	Diff	Name	Action	Action
			0-2	1	7:00	-2 (L1)	A Brown	FG Made
			0-4	1	6:45	-4	A Brown	Layup Made
H Hammond	FG Made		2-4	1	6:19	-2		
S Parsons	Putback Made		4-4	1	3:59	(T1)		
			4-5	1	3:29	-1	L Watkins	FT Made
			4-7	1	1:39	-3	A Brown	FG Made
H Hammond	FT Made		5-7	1	1:14	-2		
H Hammond	FT Made		6-7	1	1:14	-1		
			6-9	1	0:30	-3	J Betts	Layup Made
		S McCombs Assist						
T Rowe	FT Made		7-9	1	0:18	-2		
T Rowe	FT Made		8-9	1	0:18	-1		

End of Period Summary Lady Rockets 8 Lady Colonels 9

Largest Lead: Lady Rockets 0 Lady Colonels 4 (4 pts)

Lead in Period: Lady Rockets 0 Lady Colonels 4 (4 pts)

Lead Changes: 1 Ties: 1

Lead Changes: 0 Ties: 1 (this period)

8 for 8 oppo pts

3 for 2 pts

2/8 for 25.0 %

4/4 for 100 %

Turnovers

2nd Chances

Field Goals

Free Throws

4 for 0 oppo pts

3 for 0 pts

4/13 for 30.8 %

1/2 for 50.0 %

L Clontz	FG Made		10-9	2	7:53	+1 (L2)		
			10-11	2	7:29	-1 (L3)	A Brown	FG Made
H Hammond	Layup Made		12-11	2	6:07	+1 (L4)		
			12-13	2	5:45	-1 (L5)	S Petty	Layup Made
		C Stiger Assist						
			12-15	2	5:16	-3	L Watkins	Putback Made
L Clontz	Layup Made	K Parsons Assist	14-15	2	5:06	-1		
			14-17	2	4:48	-3	A Brown	Putback Made
			14-19	2	3:35	-5	A Brown	Layup Made
		R Sanchez Assist						
S Parsons	Layup Made	T Rowe Assist	16-19	2	3:24	-3		
			16-21	2	1:48	-5	A Brown	Layup Made
			16-23	2	0:41	-7	L Watkins	Layup Made
		A Brown Assist						

End of Period Summary Lady Rockets 16 Lady Colonels 23

Largest Lead: Lady Rockets 16 Lady Colonels 23 (7 pts)

Lead in Period: Lady Rockets 16 Lady Colonels 23 (7 pts)

Lead Changes: 5 Ties: 1

Lead Changes: 3 Ties: 0 (this period)

9 for 10 oppo pts

2 for 0 pts

4/12 for 33.3 %

0/0 for 0.00 %

Turnovers

2nd Chances

Field Goals

Free Throws

1 for 0 oppo pts

3 for 4 pts

7/21 for 33.3 %

0/0 for 0.00 %

			16-25	3	7:23	-9	S Petty	Layup Made
			16-27	3	7:01	-11	A Brown	Layup Made
		S Petty Assist						
			16-29	3	5:01	-13	L Watkins	Layup Made
L Clontz	Layup Made	S Parsons Assist	18-29	3	4:47	-11		
			18-31	3	4:08	-13	L Watkins	Layup Made
H Hammond	FG Made		20-31	3	3:58	-11		
			20-32	3	3:37	-12	A Brown	FT Made
			20-33	3	3:37	-13	A Brown	FT Made
H Hammond	FG Made		22-33	3	2:49	-11		
			22-35	3	2:16	-13	A Brown	Layup Made
		C Stiger Assist						
			22-37	3	1:27	-15	S Petty	Layup Made

KHSAA Basketball - Play by Play Report - Scoring Only (pg 2)
Rockcastle County Lady Rockets vs. Christian County Lady Colonels
Date: 03/25/2004 Time: 12 Noon CST Site: Diddle Arena-Bowling Green, KY Attendance: N

Name	Action	Action	Score	Clock	Diff	Name	Action	Action
A Lunsford	FG Made	S Parsons Assist	24-37	3 0:35	-13			
			24-39	3 0:23	-15	L Watkins	Layup Made	J Betts Assist
			24-41	3 0:09	-17	S Petty	Layup Made	

End of Period Summary Lady Rockets 24 Lady Colonels 41

Largest Lead: Lady Rockets 24 Lady Colonels 41 (17 pts)

Lead in Period: Lady Rockets 24 Lady Colonels 41 (17 pts)

Lead Changes: 5 Ties: 1

Lead Changes: 0 Ties: 0 (this period)

9 for 12 oppo pts

4 for 0 pts

4/11 for 36.4 %

0/5 for 0.00 %

Turnovers

2nd Chances

Field Goals

Free Throws

5 for 0 oppo pts

3 for 2 pts

8/15 for 53.3 %

2/4 for 50.0 %

H Hammond	FG Made	S Parsons Assist	26-41	4 7:51	-15			
			26-43	4 7:24	-17	A Brown	Putback Made	
			26-44	4 6:59	-18	C Stiger	FT Made	
			26-46	4 6:41	-20	A Brown	Layup Made	S McCombs Assist
L Clontz	FT Made		27-46	4 6:30	-19			
			27-48	4 6:16	-21	S Petty	FG Made	
H Hammond	Personal Foul		27-49	4 6:16	-22	S Petty	FT Made	
T Rowe	3Pt Made	A Lunsford Assist	30-49	4 5:44	-19			
L Clontz	Layup Made	S Parsons Assist	32-49	4 5:23	-17			
H Hammond	FT Made		33-49	4 4:40	-16			
H Hammond	FT Made		34-49	4 4:40	-15			
			34-50	4 4:25	-16	J Betts	FT Made	
			34-51	4 4:25	-17	J Betts	FT Made	
A Lunsford	Personal Foul		34-52	4 3:34	-18	S Petty	FT Made	
			34-53	4 3:34	-19	S Petty	FT Made	
H Hammond	Layup Made	L Clontz Assist	36-53	4 2:49	-17			
			36-55	4 2:38	-19	C Stiger	Layup Made	
T Rowe	3Pt Made		39-55	4 2:25	-16			
A Lunsford	Layup Made		41-55	4 1:21	-14			
			41-57	4 0:55	-16	S Riley	FG Made	
J Asher	FT Made		42-57	4 0:12	-15	D Mumford	Personal Foul	
J Asher	FT Made		43-57	4 0:12	-14			

End of Period Summary Lady Rockets 43 Lady Colonels 57

Largest Lead: Lady Rockets 27 Lady Colonels 49 (22 pts)

Lead in Period: Lady Rockets 27 Lady Colonels 49 (22 pts)

Lead Changes: 5 Ties: 1

Lead Changes: 0 Ties: 0 (this period)

6 for 6 oppo pts

5 for 0 pts

6/13 for 46.2 %

5/6 for 83.3 %

Turnovers

2nd Chances

Field Goals

Free Throws

4 for 6 oppo pts

5 for 4 pts

5/13 for 38.5 %

6/10 for 60.0 %

OFFICIAL BASKETBALL BOX SCORE

03/25/2004 12 Noon CST

Diddle Arena

Christian County Lady Colonels vs Rockcastle County Lady Rockets

Final Box Score

Bowling Green, KY

No.	Christian County Lady Colonels	Total FG		3-point		Free throw		Rebounds			F	TP	A	TO	BLK	STL	MIN
		FG	FGA	FG	FGA	FT	FTA	Off	Def	Tot							
3	Lydia Watkins	5	10	0	0	1	4	3	6	9	1	11	0	3	0	2	22:49
10	Shanna McCombs	0	0	0	0	0	0	0	0	0	2	0	2	2	0	0	15:08
12	Corkey Stiger	1	13	0	6	1	2	1	2	3	1	3	2	1	0	4	25:59
15	Shaleea Petty	5	16	0	1	3	3	1	2	3	1	13	1	2	0	5	29:11
24	Rita Sanchez	0	2	0	0	0	0	4	1	5	4	0	1	0	1	1	16:20
32	Arnika Brown	11	16	0	0	2	2	2	2	4	1	24	2	4	1	3	30:15
55	Jana Betts	1	3	0	0	2	2	2	1	3	2	4	1	0	0	1	8:43
34	Ashley Briggs	0	0	0	0	0	0	0	0	0	0	0	0	0	0	0	4:20
25	Annissa Wilson	0	0	0	0	0	0	0	0	0	0	0	0	0	0	0	1:27
31	Denisha Mumford	0	0	0	0	0	0	0	0	0	1	0	0	1	0	0	1:27
45	Shermania Riley	1	1	0	0	0	0	0	0	0	0	2	0	0	0	1	1:27
5	Ashley Thompkins	0	0	0	0	0	0	0	0	0	0	0	0	1	0	0	1:27
21	Shetera Lewis	0	1	0	0	0	3	1	0	1	0	0	0	0	0	1	1:27
30	Tracey Howard	0	0	0	0	0	0	0	0	0	0	0	0	0	0	0	DNP
50	Renea Maxie	0	0	0	0	0	0	0	0	0	0	0	0	0	0	0	DNP
Team (Included in Totals)																	
Totals		24	62	0	7	9	16	14	16	30	13	57	9	14	2	18	160

Total FG%: 1st half 11 - 34 (32.4%) 2nd half 13 - 28 (46.4%) Game 24 - 62 (38.7%)
 3Pt FG%: 1st half 0 - 5 (0.00%) 2nd half 0 - 2 (0.00%) Game 0 - 7 (0.00%)
 FT%: 1st half 1 - 2 (50.0%) 2nd half 8 - 14 (57.1%) Game 9 - 16 (56.3%)

Deadball rebounds 5

No.	Rockcastle County Lady Rockets	Total FG		3-point		Free throw		Rebounds			F	TP	A	TO	BLK	STL	MIN
		FG	FGA	FG	FGA	FT	FTA	Off	Def	Tot							
3	Ashley Mize	0	0	0	0	0	0	0	0	0	0	0	0	0	0	0	0:49
5	Jessi Asher	0	1	0	0	2	2	0	0	0	1	2	0	0	0	1	1:18
10	Sara Parsons	2	6	0	0	0	0	4	6	10	3	4	4	2	1	2	23:20
12	Tara Rowe	2	6	2	4	2	2	0	1	1	1	8	1	11	1	2	27:20
14	Holly Ann Colson	0	0	0	0	0	0	0	0	0	0	0	0	1	0	0	0:53
20	Ashley Lunsford	2	8	0	2	0	0	0	5	5	3	4	1	6	0	1	30:20
31	Heather Hammond	6	14	0	0	4	8	4	5	9	1	16	0	4	1	2	28:58
22	Lauren Clontz	4	8	0	0	1	3	1	2	3	3	9	1	3	0	0	27:37
21	Katie Parsons	0	1	0	0	0	0	0	2	2	1	0	1	3	0	0	13:43
32	Rachel Stocker	0	0	0	0	0	0	1	0	1	0	0	0	2	0	0	4:02
15	Rachel Killen	0	0	0	0	0	0	0	0	0	0	0	0	0	0	0	0:25
23	Ainsley Bussell	0	0	0	0	0	0	0	0	0	0	0	0	0	0	0	0:25
40	Allison Durham	0	0	0	0	0	0	0	0	0	0	0	0	0	0	0	0:25
30	Lura Cash	0	0	0	0	0	0	0	0	0	0	0	0	0	0	0	0:25
35	Jessica Robinson	0	0	0	0	0	0	0	0	0	0	0	0	0	0	0	DNP
4	Johnna Abney	0	0	0	0	0	0	0	0	0	0	0	0	0	0	0	DNP
Team (Included in Totals)																	
Totals		16	44	2	6	9	15	14	25	39	13	43	8	32	3	8	160

Total FG%: 1st half 6 - 20 (30.0%) 2nd half 10 - 24 (41.7%) Game 16 - 44 (36.4%)
 3Pt FG%: 1st half 0 - 1 (0.00%) 2nd half 2 - 5 (40.0%) Game 2 - 6 (33.3%)
 FT%: 1st half 4 - 4 (100%) 2nd half 5 - 11 (45.5%) Game 9 - 15 (60.0%)

Deadball rebounds 5

Technical Fouls: None

Attendance: N

Officials: Shannon Feck, Tony Beard, Jack Whittemore

Score by Period						1st	2nd	3rd	4th	Final	Record	Overall	Conf
Christian County Lady Colonels						9	14	18	16	57	Lady Colonels		
Rockcastle County Lady Rockets						8	8	8	19	43	Lady Rockets		

Lady Rockets		Lady Colonels		Lady Rockets		Lady Colonels	
Points off Turnovers	6	36	Second Effort Points	2	10	Bench Points	6
Points in the Paint	18	40	3 Point Points	6	0	Free Throw Points	9
3pt Efficiency	+8.8	-29.1	Points/Shot	0.84	0.81	Defensive Stops	39
Largest Lead	27	49 (22 pts)	Lead Changes	4		Number of Ties	1

Game comments: None